



11815 NE 99th Street, Suite 1294
Vancouver, WA 98662
Voice: 360-574-3058
Fax: 360-576-0925
Web: <https://www.swcleanair.gov>
Email: Tina@swcleanair.gov

Notice of Intent to Remove Asbestos

Case #: 24-863

Amendment: 0

Date Received: 12/19/2024

Date Paid: 12/19/2024

SWCAA Fee: \$369.00

Receipt #: 168004745

This notification MUST be present at all times at the asbestos project sit

Quantity to be removed: 1000 Square Feet 0 Linear Feet

Workshift days: M T W Th F

Project starting date: 12/30/2024 Project Completion date: 1/3/2025

Workshift hours: 8:00AM - 4:30PM

Site Name: 125 Morse Park Way Units 7,8,9

Site address: 125 Morse Parkk Way

Location of Asbestos: Kitchen/entry way/ceiling

City/State/Zip: Longview

WA 98632

☐ Demolition of Structure (Notification of Demolition required)

County: COWLITZ COUNTY

☒ Asbestos survey conducted?

No survey reason:

AHERA Inspector: Kyler Spears

Certification #: 187341

Material to be Removed:

☐ Fireproofing

☐ Popcorn Ceiling

☐ CAB

☒ Sheet Vinyl

☐ Boiler Insulation

☐ Duct Tape

☐ Duct Paper

☐ Mag Pipe Insulation

☐ Air Cell

☐ CA Pipe

☐ VAT

☒ Other Sheetrock Mud

Control Methods:

☒ N.P Enclosure

☐ Glove Bag

☐ Mini Enclosure

☐ Wrap and Cut

☒ Water

☐ HEPA Vac

☒ Other Manual Methods

Asbestos Contractor: Keystone Contracting, Inc.

Phone: 360-887-0868

Mailing Address: 417 NW 209th St, Ridgefield, WA, 98642

Email: keystone417@tds.net

Certification ##: ABCN00001024

Supervisor: Juan Villegas

Phone: 503-855-8353

Property Owner: Sunste Village Apartments

Phone: 360-636-6086

Mailing Address: 5110 NW Cherry St, Vancouver WA 98663

Asbestos Disposal Site: Wasco County Landfill: 2550 Steele Rd, The Dalles, OR, 97058-

**I DO HEREBY CERTIFY THAT THE INFORMATION CONTAINED IN THIS NOTIFICATION IS,
TO THE BEST OF MY KNOWLEDGE, ACCURATE AND COMPLETE.**

Submitter Name: Kamala Lopez

Representing: Keystone Contracting, Inc

Submitter Title: Office Manager

Date Submitted: 12/19/2024

Reviewed by SWCAA: Mihai Voivod

☒ Approved

LIMITED ASBESTOS SURVEY

For Unit 7, Unit #8, and Unit #9 located at:

**125 MORSE PARK WAY
LONGVIEW, WASHINGTON**

Prepared for:
All Phase Construction

**CERTIFIED ENVIRONMENTAL CONSULTING, LLC
615 SE CHKALOV DRIVE SUITE 12
VANCOUVER, WASHINGTON 98683-5280**

Prepared by:
Don Young
Kyler Spears
Eric S. Viken

EXECUTIVE SUMMARY

Dear Mr. Cantrell:

Enclosed are the results of the limited asbestos survey report conducted by C.E.C., LLC, for Unit #7, Unit #8, and Unit #9 located at, 125 Morse Park Way, in Longview, Washington for renovation purposes. This survey was coordinated with you and conducted on December 2, 2024, by Kyler Spears, Don Young, and Eric S. Viken, AHERA certified inspectors. Please note that this survey is limited to the area of renovation. This location is fire and smoke damaged.

All samples were taken in a random manner as required by EPA AHERA rules and analyzed using polarized light microscopy with dispersion staining according to EPA and OR-OSHA Methodology. The samples were analyzed in C.E.C., LLC's laboratory at, 615 SE Chkalov Drive Suite #12, in Vancouver, Washington. As the asbestos samples were analyzed in our laboratory, the analytical data enclosed is the analysis report.

Asbestos was identified in the white sprayed on ceiling texture, and yellow sheet vinyl (See sample data sheet attached). Please note: the quantities and/or amounts listed within (Summary Data, Assessment of Materials sections) are estimates only and are not to be relied upon for estimating the removal costs. All quantities and/or amounts should be field verified by the responsible parties for the true amounts and removal costs.

The following survey is divided into the following sections:

- ◇ Summary sheet - details the type and construction of the building with approximate amounts of asbestos in the building.
- ◇ Sample result sheet - contains sample numbers and results, description of materials and homogeneous areas of material.
- ◇ Assessment of materials - contains an assessment of asbestos materials.
- ◇ Response actions recommended - contains the response actions we recommend.
- ◇ Laboratory analysis sheet - contains the results of our laboratory analysis.
- ◇ Inspector's certifications.
- ◇ Photographic log.
- ◇ Asbestos chain of custody form (survey report form).

C.E.C. has investigated accessible and inaccessible areas of this facility in locating suspect ACM using destructive sampling including the interior and exterior. The current extent and condition of the ACM was detected through on-site observation and physical determination.

NOTE: This asbestos survey report is available to All Phase Construction, and not to be reproduced in total or part without written consent of All Phase Construction.

We appreciate the opportunity to have worked with you. If you have any questions or if we can be of any further service, please contact our office.

Sincerely,



Don Young
Principal

SUMMARY SHEET

Owner or Representative: Lewis Cantrell

Address: Unit 7, Unit #8, and Unit #9 at, 125 Morse Park Way

City: Longview **State:** Washington

Owner's Representative: All Phase Construction
Mr. Lewis Cantrell
PO Box 1195
Longview, Washington 98632

Owner/Rep. Telephone Number: (360) 636-6086

Surveyed by: Kyler Spears-Accreditation Number: 195551
Don Young-Accreditation Number: 194365
Eric S. Viken-Accreditation Number: 195552

CONSTRUCTION DATA:

Year Built: Approx.: 1970's

Size: Approx. 700 SQ FT-Each Unit

Construction Type: Wood, Concrete, Metal

Current/Past Use: Residential / Residential

Number of Floors: 1

Roof Construction: Asphalt Shingle-Not in Scope of Work

Heating System: Electric

Attic Insulation: Fiberglass-Not in Scope of Work

Pipe Insulation: Non-Insulated

CERTIFIED ENVIRONMENTAL CONSULTING, LLC

SUMMARY DATA

UNIT #7, UNIT #8, AND UNIT #9 AT, 125 MORSE PARK WAY, LONGVIEW, WASHINGTON

PRODUCT	FUNCTIONAL SPACE	AMOUNT	FRIABLE	CONDITION	SAMPLE #	RESULTS
WHITE SPRAYED ON CEILING TEXTURE	KITCHEN UNIT #8, HALLWAY UNIT #8, LIVING ROOM UNIT #8	APPROX. 600 SQ FT	YES	GOOD	1, 2, 3	6% CHRYSOTILE
YELLOW SHEET VINYL	THIRD LAYER KITCHEN UNIT #8, THIRD LAYER ENTRY UNIT #8, THIRD LAYER KITCHEN UNIT #7, THIRD LAYER ENTRY UNIT #7, THIRD LAYER KITCHEN UNIT #9, THIRD LAYER ENTRY UNIT #9, THIRD LAYER BATHROOM UNIT #9	APPROX. 550 SQ FT	YES	GOOD	14, 22, 27	20% CHRYSOTILE

Please note: the quantities and/or amounts listed within (Summary Data, Assessment of Materials sections) are estimates only and are not to be relied upon for estimating the removal costs. All quantities and/or amounts should be field verified by the responsible parties for the true amounts and removal costs

Certified Environmental Consulting, LLC, warrants that the findings contained herein have been prepared in general accordance with accepted professional practices as applied by similar professionals in the community at the time of this report preparation. Changes in the state of the art or in applicable regulations cannot be anticipated and have not been addressed in this report. The field and laboratory results reported herein are considered sufficient in detail and scope to determine presence of asbestos containing materials in or around the area(s) requested at the time of the inspection. Test results are valid only for the materials tested.

There is a distinct possibility that conditions may exist that could not be identified within the scope of the inspection or that were not apparent during the site visit. This inspection covered only those areas that were exposed or physically accessible to the inspector. The inspection is limited to the information available from the client at the time of the inspection was conducted.

SAMPLE RESULTS**UNIT #7, UNIT #8, AND UNIT #9 AT, 125 MORSE PARK WAY, LONGVIEW,
WASHINGTON**

SAMPLE #	SAMPLE DESCRIPTION	SAMPLE LOCATION	HOMOGENEOUS AREA	ASBESTOS CONTENT
1	WHITE SPRAYED ON CEILING TEXTURE	KITCHEN UNIT #8	HALLWAY UNIT #8, LIVING ROOM UNIT #8	6% CHRYSOTILE
2	WHITE SPRAYED ON CEILING TEXTURE	HALLWAY UNIT #8	KITCHEN UNIT #8, LIVING ROOM UNIT #8	6% CHRYSOTILE
3	WHITE SPRAYED ON CEILING TEXTURE	LIVING ROOM UNIT #8	KITCHEN UNIT #8, HALLWAY UNIT #8	6% CHRYSOTILE
4	WHITE GYPSUM WALLBOARD WITH TAPE AND MUD	KITCHEN UNIT #8	THROUGHOUT	NONE DETECTED
5	WHITE GYPSUM WALLBOARD WITH TAPE AND MUD	HALLWAY UNIT #8	THROUGHOUT	NONE DETECTED
6	WHITE GYPSUM WALLBOARD WITH TAPE AND MUD	LIVING ROOM UNIT #8	THROUGHOUT	NONE DETECTED
7	WHITE WALL TEXTURE	KITCHEN UNIT #8	THROUGHOUT	NONE DETECTED
8	WHITE WALL TEXTURE	HALLWAY UNIT #8	THROUGHOUT	NONE DETECTED
9	WHITE WALL TEXTURE	LIVING ROOM UNIT #8	THROUGHOUT	NONE DETECTED
10	BLACK INSULATION	EXTERIOR WALL UNIT #8	THROUGHOUT	NONE DETECTED
11A	WHITE COVE BASE	KITCHEN UNIT #8	BATHROOM UNIT #8	NONE DETECTED
11B	WHITE COVE BASE MASTIC	KITCHEN UNIT #8	BATHROOM UNIT #8	NONE DETECTED
12	BROWN SHEET VINYL	TOP LAYER KITCHEN UNIT #8	TOP LAYER ENTRY UNIT #8	NONE DETECTED
13	GRAY SHEET VINYL	SECOND LAYER KITCHEN UNIT #8	SECOND LAYER ENTRY UNIT #8	NONE DETECTED
14	YELLOW SHEET VINYL	THIRD LAYER KITCHEN UNIT #8	THIRD LAYER ENTRY UNIT #8	20% CHRYSOTILE

SAMPLE RESULTS**UNIT #7, UNIT #8, AND UNIT #9 AT, 125 MORSE PARK WAY, LONGVIEW,
WASHINGTON**

SAMPLE #	SAMPLE DESCRIPTION	SAMPLE LOCATION	HOMOGENEOUS AREA	ASBESTOS CONTENT
15	GRAY BACKERBOARD	BOTTOM LAYER KITCHEN UNIT #8	THROUGHOUT AS BOTTOM LAYER	NONE DETECTED
16	GRAY VINYL TILE	TOP LAYER LIVING ROOM UNIT #8		NONE DETECTED
17	BROWN SHEET VINYL	TOP LAYER BATHROOM UNIT #8		NONE DETECTED
18	TAN SHEET VINYL	SECOND LAYER BATHROOM UNIT #8		NONE DETECTED
19A	WHITE COVE BASE	KITCHEN UNIT #7	BATHROOM UNIT #7	NONE DETECTED
19B	YELLOW COVE BASE MASTIC	KITCHEN UNIT #7	BATHROOM UNIT #7	NONE DETECTED
20	TAN SHEET VINYL	TOP LAYER KITCHEN UNIT #7	TOP LAYER ENTRY UNIT #7	NONE DETECTED
21	TAN SHEET VINYL	SECOND LAYER KITCHEN UNIT #7	SECOND LAYER ENTRY UNIT #7	NONE DETECTED
22	YELLOW SHEET VINYL	THIRD LAYER KITCHEN UNIT #7	THIRD LAYER ENTRY UNIT #7	20% CHRYSOTILE
23	GRAY LEVELLING COMPOUND	BOTTOM LAYER KITCHEN UNIT #7	BOTTOM LAYER ENTRY UNIT #7	NONE DETECTED
24A	GRAY COVE BASE	KITCHEN UNIT #9	BATHROOM UNIT #9	NONE DETECTED
24B	WHITE COVE BASE MASTIC	KITCHEN UNIT #9	BATHROOM UNIT #9	NONE DETECTED
25	BROWN SHEET VINYL	TOP LAYER KITCHEN UNIT #9	TOP LAYER ENTRY UNIT #9, TOP LAYER BATHROOM UNIT #9	NONE DETECTED
26	TAN SHEET VINYL	SECOND LAYER KITCHEN UNIT #9	SECOND LAYER ENTRY UNIT #9, SECOND LAYER BATHROOM UNIT #9	NONE DETECTED
27	YELLOW SHEET VINYL	THIRD LAYER KITCHEN UNIT #9	THIRD LAYER ENTRY UNIT #9, THIRD LAYER BATHROOM UNIT #9	20% CHRYSOTILE

SAMPLE RESULTS**UNIT #7, UNIT #8, AND UNIT #9 AT, 125 MORSE PARK WAY, LONGVIEW,
WASHINGTON**

SAMPLE #	SAMPLE DESCRIPTION	SAMPLE LOCATION	HOMOGENEOUS AREA	ASBESTOS CONTENT
28	WHITE LEVELING COMPOUND	BOTTOM LAYER KITCHEN UNIT #9	BOTTOM LAYER ENTRY UNIT #9, BOTTOM LAYER BATHROOM UNIT #9	NONE DETECTED
29	WHITE GYPSUM WALLBOARD WITH TAPE AND MUD	CARPORT		NONE DETECTED
30	WHITE GYPSUM WALLBOARD WITH TAPE AND MUD	CARPORT		NONE DETECTED
31	WHITE GYPSUM WALLBOARD WITH TAPE AND MUD	CARPORT		NONE DETECTED
32	WHITE GYPSUM WALLBOARD WITH TAPE AND MUD	CARPORT		NONE DETECTED
33	WHITE GYPSUM WALLBOARD WITH TAPE AND MUD	CARPORT		NONE DETECTED
34	WHITE GYPSUM WALLBOARD WITH TAPE AND MUD	CARPORT		NONE DETECTED
35	GRAY HARDY BOARD (CEMENT) SIDING	AS EXTERIOR SIDING CARPORT		NONE DETECTED
36	GRAY HARDY BOARD (CEMENT) SIDING	AS EXTERIOR SIDING CARPORT		NONE DETECTED
37	BLACK TAR PAPER	UNDER GRAY HARDY BOARD (CEMENT) SIDING		NONE DETECTED
38	BLACK TAR PAPER	UNDER GRAY HARDY BOARD (CEMENT) SIDING		NONE DETECTED

ASSESSMENT OF MATERIALS

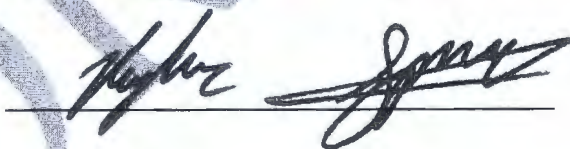
Building: **UNIT #7, UNIT #8, AND UNIT #9 AT, 125 MORSE PARK WAY,
LONGVIEW, WASHINGTON**

Sample #s	Functional Space	Asbestos Type	%	Material And Condition	Comments	Sq. Ft. And/Or Linear Footage
1, 2, 3	KITCHEN UNIT #8, HALLWAY UNIT #8, LIVING ROOM UNIT #8	CHRYSTILE	6%	WHITE SPRAYED ON CEILING TEXTURE (GOOD)	SEE ACTION RESPONSES	APPROX. 600 SQ FT
14, 22, 27	THIRD LAYER KITCHEN UNIT #8, THIRD LAYER ENTRY UNIT #8, THIRD LAYER KITCHEN UNIT #7, THIRD LAYER ENTRY UNIT #7, THIRD LAYER KITCHEN UNIT #9, THIRD LAYER ENTRY UNIT #9, THIRD LAYER BATHROOM UNIT #9	CHRYSTILE	20%	YELLOW SHEET VINYL (GOOD)	SEE RESPONSE ACTIONS	APPROX. 550 SQ FT

Please note: the quantities and/or amounts listed within (Summary Data, Assessment of Materials sections) are estimates only and are not to be relied upon for estimating the removal costs. All quantities and/or amounts should be field verified by the responsible parties for the true amounts and removal costs.

Inspector: Kyler Spears- Accreditation Number: 195551

Signature:



Date: December 5, 2024

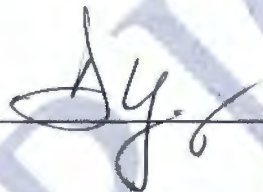
RESPONSE ACTIONS RECOMMENDED

Building: **UNIT #7, UNIT #8, AND UNIT #9 AT, 125 MORSE PARK WAY,
LONGVIEW, WASHINGTON**

MATERIAL	LOCATION	RECOMMENDED RESPONSE ACTIONS
SPRAYED ON CEILING TEXTURE (WHITE)	KITCHEN UNIT #8, HALLWAY UNIT #8, LIVING ROOM UNIT #8	Sprayed on ceiling texture is a friable material, which is currently in good condition and poses no health risk in its current state. It is important to keep it encapsulated with a high vehicular latex paint. Do not sand on, drill through, remove, or otherwise disturb material. Must be removed prior to renovation or demolition.
SHEET VINYL (YELLOW)	THIRD LAYER KITCHEN UNIT #8, THIRD LAYER ENTRY UNIT #8, THIRD LAYER KITCHEN UNIT #7, THIRD LAYER ENTRY UNIT #7, THIRD LAYER KITCHEN UNIT #9, THIRD LAYER ENTRY UNIT #9, THIRD LAYER BATHROOM UNIT #9	Sheet vinyl is a friable material currently in good condition and poses no health hazards in its present state. Do not drill through, sand on, tear, remove, or otherwise disturb material. Must be removed prior to renovation or demolition.

Management Planner: Don Young - Accreditation Number: 194564

Signature: _____



Date December 5, 2024

CERTIFIED ENVIRONMENTAL CONSULTING, LLC

SAMPLE ANALYSIS REPORT

CLIENT: ALL PHASE CONSTRUCTION

SOURCE: UNIT #7, UNIT #8, AND UNIT #9 AT,
125 MORSE PARK WAY,
LONGVIEW, WASHINGTON

MR. LEWIS CANTRELL

PO BOX 1195

LONGVIEW, WASHINGTON 98632

SAMPLED BY: KYLER SPEARS/ERIC S. VIKEN

LAB/JOB #: JJ-1364/24-309

ANALYZED BY: KYLER SPEARS

DATE SAMPLED: 12-02-24

DATE RECEIVED: 12-02-24

DATE COMPLETED: 12-03-24

ANALYTICAL METHOD: EPA 600/R-93/116, 40 CFR Part 763, Subpart E, Appendix E, Section 1,
PLM/Dispersion Staining

SAMPLE ID #	SAMPLE DESCRIPTION	SAMPLE LOCATION	ASBESTOS CONTENT	OTHER MATERIAL
1	WHITE SPRAYED ON CEILING TEXTURE	KITCHEN UNIT #8	6% CHRYSOTILE	3% CELLULOSE, CALCIUM CARBONATE, SYNTHETIC FOAM, BINDER
2	WHITE SPRAYED ON CEILING TEXTURE	HALLWAY UNIT #8	6% CHRYSOTILE	3% CELLULOSE, CALCIUM CARBONATE, SYNTHETIC FOAM, BINDER
3	WHITE SPRAYED ON CEILING TEXTURE	LIVING ROOM UNIT #8	6% CHRYSOTILE	3% CELLULOSE, CALCIUM CARBONATE, SYNTHETIC FOAM, BINDER
4	WHITE GYPSUM WALLBOARD WITH TAPE AND MUD	KITCHEN UNIT #8	NONE DETECTED	15% CELLULOSE, 5% FIBERGLASS, CALCIUM SULFATE, CALCIUM CARBONATE, BINDER
5	WHITE GYPSUM WALLBOARD WITH TAPE AND MUD	HALLWAY UNIT #8	NONE DETECTED	15% CELLULOSE, 5% FIBERGLASS, CALCIUM SULFATE, CALCIUM CARBONATE, BINDER
6	WHITE GYPSUM WALLBOARD WITH TAPE AND MUD	LIVING ROOM UNIT #8	NONE DETECTED	15% CELLULOSE, 5% FIBERGLASS, CALCIUM SULFATE, CALCIUM CARBONATE, BINDER
7	WHITE WALL TEXTURE	KITCHEN UNIT	NONE DETECTED	3% CELLULOSE, CALCIUM CARBONATE, BINDER

ANALYST: 

DEVIATION FROM METHOD: NONE.

PERCENTAGES ARE ESTIMATES.

TEST RESULTS PERTAIN ONLY TO ITEMS TESTED.

* DETECTION LIMIT IS LESS THAN 1% ASBESTOS.

NON-ASBESTOS MATERIALS ARE NOT NECESSARILY LISTED.

REVIEWED BY: 

SAMPLE ANALYSIS REPORT**CLIENT:** ALL PHASE CONSTRUCTION**SOURCE:** UNIT #7, UNIT #8, AND UNIT #9 AT,
125 MORSE PARK WAY,
LONGVIEW, WASHINGTONMR. LEWIS CANTRELL
PO BOX 1195
LONGVIEW, WASHINGTON 98632**SAMPLED BY:** KYLER SPEARS/ERIC S. VIKEN
LAB/JOB #: JJ-1364/24-309**ANALYZED BY:** KYLER SPEARS**DATE SAMPLED:** 12-02-24**DATE RECEIVED:** 12-02-24**DATE COMPLETED:** 12-03-24ANALYTICAL METHOD: EPA 600/R-93/116, 40 CFR Part 763, Subpart E, Appendix E, Section 1,
PLM/Dispersion Staining

SAMPLE ID #	SAMPLE DESCRIPTION	SAMPLE LOCATION	ASBESTOS CONTENT	OTHER MATERIAL
8	WHITE WALL TEXTURE	HALLWAY UNIT #8	NONE DETECTED	3% CELLULOSE, CALCIUM CARBONATE, BINDER
9	WHITE WALL TEXTURE	LIVING ROOM UNIT #8	NONE DETECTED	3% CELLULOSE, CALCIUM CARBONATE, BINDER
10	BLACK INSULATION	EXTERIOR WALL UNIT #8	NONE DETECTED	70% FIBERGLASS, DEBRIS
11A	WHITE COVE BASE	KITCHEN UNIT #8	NONE DETECTED	SILICONE CEMENT, VINYL
11B	WHITE COVE BASE MASTIC	KITCHEN UNIT #8	NONE DETECTED	ADHESIVE, CLAY
12	BROWN SHEET VINYL	TOP LAYER KITCHEN UNIT #8	NONE DETECTED	20% FIBERGLASS, VINYL, CALCITE, ADHESIVE
13	GRAY SHEET VINYL	SECOND LAYER KITCHEN UNIT #8	NONE DETECTED	20% CELLULOSE, VINYL, CALCITE, ADHESIVE
14	YELLOW SHEET VINYL	THIRD LAYER KITCHEN UNIT #8	20% CHRYSOTILE	10% CELLULOSE, VINYL, CALCITE, ADHESIVE
15	GRAY BACKERBOARD	BOTTOM LAYER KITCHEN UNIT #8	NONE DETECTED	55% CELLULOSE, CEMENT, AGGREGATE, ADHESIVE

ANALYST:DEVIATION FROM METHOD: NONE.
PERCENTAGES ARE ESTIMATES.

TEST RESULTS PERTAIN ONLY TO ITEMS TESTED.

* DETECTION LIMIT IS LESS THAN 1% ASBESTOS.

NON-ASBESTOS MATERIALS ARE NOT NECESSARILY LISTED.

REVIEWED BY:

SAMPLE ANALYSIS REPORT**CLIENT:** ALL PHASE CONSTRUCTIONMR. LEWIS CANTRELL
PO BOX 1195
LONGVIEW, WASHINGTON 98632**DATE SAMPLED:** 12-02-24**DATE RECEIVED:** 12-02-24**DATE COMPLETED:** 12-03-24**SOURCE:** UNIT #7, UNIT #8, AND UNIT #9 AT,
125 MORSE PARK WAY,
LONGVIEW, WASHINGTON**SAMPLED BY:** KYLER SPEARS/ERIC S. VIKEN**LAB/JOB #:** JJ-1364/24-309**ANALYZED BY:** KYLER SPEARSANALYTICAL METHOD: EPA 600/R-93/116, 40 CFR Part 763, Subpart E, Appendix E, Section 1,
PLM/Dispersion Staining

SAMPLE ID #	SAMPLE DESCRIPTION	SAMPLE LOCATION	ASBESTOS CONTENT	OTHER MATERIAL
16	GRAY VINYL TILE	TOP LAYER LIVING ROOM UNIT #8	NONE DETECTED	VINYL, ADHESIVE, BINDER
17	BROWN SHEET VINYL	TOP LAYER BATHROOM UNIT #8	NONE DETECTED	20% FIBERGLASS, VINYL, CALCITE, ADHESIVE
18	TAN SHEET VINYL	SECOND LAYER BATHROOM UNIT #8	NONE DETECTED	20% CELLULOSE, VINYL, CALCITE, ADHESIVE
19A	WHITE COVE BASE	KITCHEN UNIT #7	NONE DETECTED	SILICONE CEMENT, VINYL, ADHESIVE
19B	YELLOW COVE BASE MASTIC	KITCHEN UNIT #7	NONE DETECTED	ADHESIVE, CLAY
20	TAN SHEET VINYL	TOP LAYER KITCHEN UNIT #7	NONE DETECTED	20% FIBERGLASS, VINYL, CALCITE, ADHESIVE
21	TAN SHEET VINYL	SECOND LAYER KITCHEN UNIT #7	NONE DETECTED	20% CELLULOSE, VINYL, CALCITE, ADHESIVE
22	YELLOW SHEET VINYL	THIRD LAYER KITCHEN UNIT #7	20% CHRYSOTILE	5% CELLULOSE, VINYL, CALCITE, ADHESIVE
23	GRAY LEVELING COMPOUND	BOTTOM LAYER KITCHEN UNIT #7	NONE DETECTED	CALCIUM CARBONATE, BINDER, AGGREGATE, CEMENT

ANALYST:DEVIATION FROM METHOD: NONE.
PERCENTAGES ARE ESTIMATES.

TEST RESULTS PERTAIN ONLY TO ITEMS TESTED.

* DETECTION LIMIT IS LESS THAN 1% ASBESTOS.

NON-ASBESTOS MATERIALS ARE NOT NECESSARILY LISTED.

REVIEWED BY:

SAMPLE ANALYSIS REPORT**CLIENT:** ALL PHASE CONSTRUCTION**SOURCE:** UNIT #7, UNIT #8, AND UNIT #9 AT,
125 MORSE PARK WAY,
LONGVIEW, WASHINGTON

MR. LEWIS CANTRELL

PO BOX 1195

LONGVIEW, WASHINGTON 98632

SAMPLED BY: KYLER SPEARS/ERIC S. VIKEN**LAB/JOB #:** JJ-1364/24-309**ANALYZED BY:** KYLER SPEARS**DATE SAMPLED:** 12-02-24**DATE RECEIVED:** 12-02-24**DATE COMPLETED:** 12-03-24ANALYTICAL METHOD: EPA 600/R-93/116, 40 CFR Part 763, Subpart E, Appendix E, Section 1,
PLM/Dispersion Staining

SAMPLE ID #	SAMPLE DESCRIPTION	SAMPLE LOCATION	ASBESTOS CONTENT	OTHER MATERIAL
24A	GRAY COVE BASE	KITCHEN UNIT #9	NONE DETECTED	SILICONE CEMENT, VINYL, ADHESIVE
24B	WHITE COVE BASE MASTIC	KITCHEN UNIT #9	NONE DETECTED	ADHESIVE, CLAY
25	BROWN SHEET VINYL	TOP LAYER KITCHEN UNIT #9	NONE DETECTED	20% FIBERGLASS, VINYL, CALCITE, ADHESIVE
26	TAN SHEET VINYL	SECOND LAYER KITCHEN UNIT #9	NONE DETECTED	20% CELLULOSE, VINYL, CALCITE, ADHESIVE
27	YELLOW SHEET VINYL	THIRD LAYER KITCHEN UNIT #9	20% CHRYSOTILE	5% CELLULOSE, VINYL, CALCITE, ADHESIVE
28	WHITE LEVELING COMPOUND	BOTTOM LAYER KITCHEN UNIT #9	NONE DETECTED	AGGREGATE, CEMENT
29	WHITE GYPSUM WALLBOARD WITH TAPE AND MUD	CARPORT	NONE DETECTED	15% FIBERGLASS, 3% CELLULOSE, CALCIUM SULFATE, CALCIUM CARBONATE, BINDER
30	WHITE GYPSUM WALLBOARD WITH TAPE AND MUD	CARPORT	NONE DETECTED	15% FIBERGLASS, 3% CELLULOSE, CALCIUM SULFATE, CALCIUM CARBONATE, BINDER

ANALYST: 

DEVIATION FROM METHOD: NONE.

PERCENTAGES ARE ESTIMATES.

TEST RESULTS PERTAIN ONLY TO ITEMS TESTED.

* DETECTION LIMIT IS LESS THAN 1% ASBESTOS.

NON-ASBESTOS MATERIALS ARE NOT NECESSARILY LISTED.

REVIEWED BY: 

SAMPLE ANALYSIS REPORT**CLIENT:** ALL PHASE CONSTRUCTION**SOURCE:** UNIT #7, UNIT #8, AND UNIT #9 AT,
125 MORSE PARK WAY,
LONGVIEW, WASHINGTON

MR. LEWIS CANTRELL

PO BOX 1195

LONGVIEW, WASHINGTON 98632

SAMPLED BY: KYLER SPEARS/ERIC S. VIKEN**LAB/JOB #:** JJ-1364/24-309**ANALYZED BY:** KYLER SPEARS**DATE SAMPLED:** 12-02-24**DATE RECEIVED:** 12-02-24**DATE COMPLETED:** 12-03-24ANALYTICAL METHOD: EPA 600/R-93/116, 40 CFR Part 763, Subpart E, Appendix E, Section I,
PLM/Dispersion Staining

SAMPLE ID #	SAMPLE DESCRIPTION	SAMPLE LOCATION	ASBESTOS CONTENT	OTHER MATERIAL
31	WHITE GYPSUM WALLBOARD WITH TAPE AND MUD	CARPORT	NONE DETECTED	15% FIBERGLASS, 3% CELLULOSE, CALCIUM SULFATE, CALCIUM CARBONATE, BINDER
32	WHITE GYPSUM WALLBOARD WITH TAPE AND MUD	CARPORT	NONE DETECTED	15% FIBERGLASS, 3% CELLULOSE, CALCIUM SULFATE, CALCIUM CARBONATE, BINDER
33	WHITE GYPSUM WALLBOARD WITH TAPE AND MUD	CARPORT	NONE DETECTED	15% FIBERGLASS, 3% CELLULOSE, CALCIUM SULFATE, CALCIUM CARBONATE, BINDER
34	WHITE GYPSUM WALLBOARD WITH TAPE AND MUD	CARPORT	NONE DETECTED	15% FIBERGLASS, 3% CELLULOSE, CALCIUM SULFATE, CALCIUM CARBONATE, BINDER
35	GRAY HARDY BOARD (CEMENT) SIDING	AS EXTERIOR SIDING CARPORT	NONE DETECTED	55% CELLULOSE, CEMENT, ADHESIVE
36	GRAY HARDY BOARD (CEMENT) SIDING	AS EXTERIOR SIDING CARPORT	NONE DETECTED	55% CELLULOSE, CEMENT, ADHESIVE
37	BLACK TAR PAPER	UNDER HARDY BOARD (CEMENT) SIDING CARPORT	NONE DETECTED	80% CELLULOSE, TAR, ADHESIVE
38	BLACK TAR PAPER	UNDER HARDY BOARD (CEMENT) SIDING CARPORT	NONE DETECTED	80% CELLULOSE, TAR, ADHESIVE

ANALYST:

DEVIATION FROM METHOD: NONE.

PERCENTAGES ARE ESTIMATES.

TEST RESULTS PERTAIN ONLY TO ITEMS TESTED.

* DETECTION LIMIT IS LESS THAN 1% ASBESTOS.

NON-ASBESTOS MATERIALS ARE NOT NECESSARILY LISTED.

REVIEWED BY:

Certificate of Completion

This is to certify that
Kyler J.M. Spears
has satisfactorily completed
4 hours of online refresher training as an
AHERA Building Inspector
to comply with the training requirements of
TSCA Title II, 40 CFR 763 (AHERA)
EPA Provider # 1085

195551
Certificate Number


Instructor: David Welch



- Facilities
- Environmental
- Geotechnical
- Materials

Nov 25, 2024 Expires in 1 year.
Date(s) of Training
Exam Score: N/A
(if applicable)

TELEVISION TRAINING CENTER, 10000 10TH AVENUE, SUITE 100, NORTH BEND, WISCONSIN 54856-1100, MOUNTAIN VIEW TERRACE, WASHINGTON 98041 TEL (360) 251-1170 FAX (360) 251-1171 EHS-TRAINING@TERRACON.COM

ONLY

Certificate of Completion

This is to certify that
Don E. Young
has satisfactorily completed
4 hours of online refresher training as an
AHERA Building Inspector
to comply with the training requirements of
TSCA Title II, 40 CFR 763 (AHERA)
EPA Provider # 1085

194365
Certificate Number


Instructor: Tracy Bockla



• Facilities
• Environmental
• Geotechnical
• Materials

Jul 11, 2024 Expires in 1 year.

Date(s) of Training

Exam Score: N/A
(if applicable)

Certificate of Completion

This is to certify that
Don E. Young
has satisfactorily completed
4 hours of online refresher training as an
AHERA Management Planner
to comply with the training requirements of
TSCA Title II, 40 CFR 763 (AHERA)
EPA Provider # 1085

194564
Certificate Number


Instructor: David Welch



• Facilities
• Environmental
• Geotechnical
• Materials

Jul 31, 2024 Expires in 1 year.

Date(s) of Training

Exam Score: N/A
(if applicable)

Certificate of Completion

This is to certify that

Eric S. Viken

has satisfactorily completed
4 hours of online refresher training as an
AHERA Building Inspector

to comply with the training requirements of
TSCA Title II, 40 CFR 763 (AHERA)

EPA Provider # 1085

195552
Certificate Number



Instructor: David Welch



- Facilities
- Environmental
- Geotechnical
- Materials

Nov 25, 2024

Expires in 1 year.

Date(s) of Training

Exam Score: N/A
(if applicable)

TERRACON TRAINING CENTER GROUP, INC. 1501 SOUTH AVE. SUITE 100 MOUNTAIN VIEW TERRACE, WASHINGTON 98043 / 206.215.3373 / EHS-TRAINING@TERRACON.COM


OK

Photographic Log

ORIGINAL







**4,5,6
gypsum wallboard
w/ tape & mud
7,8,9
wall texture**













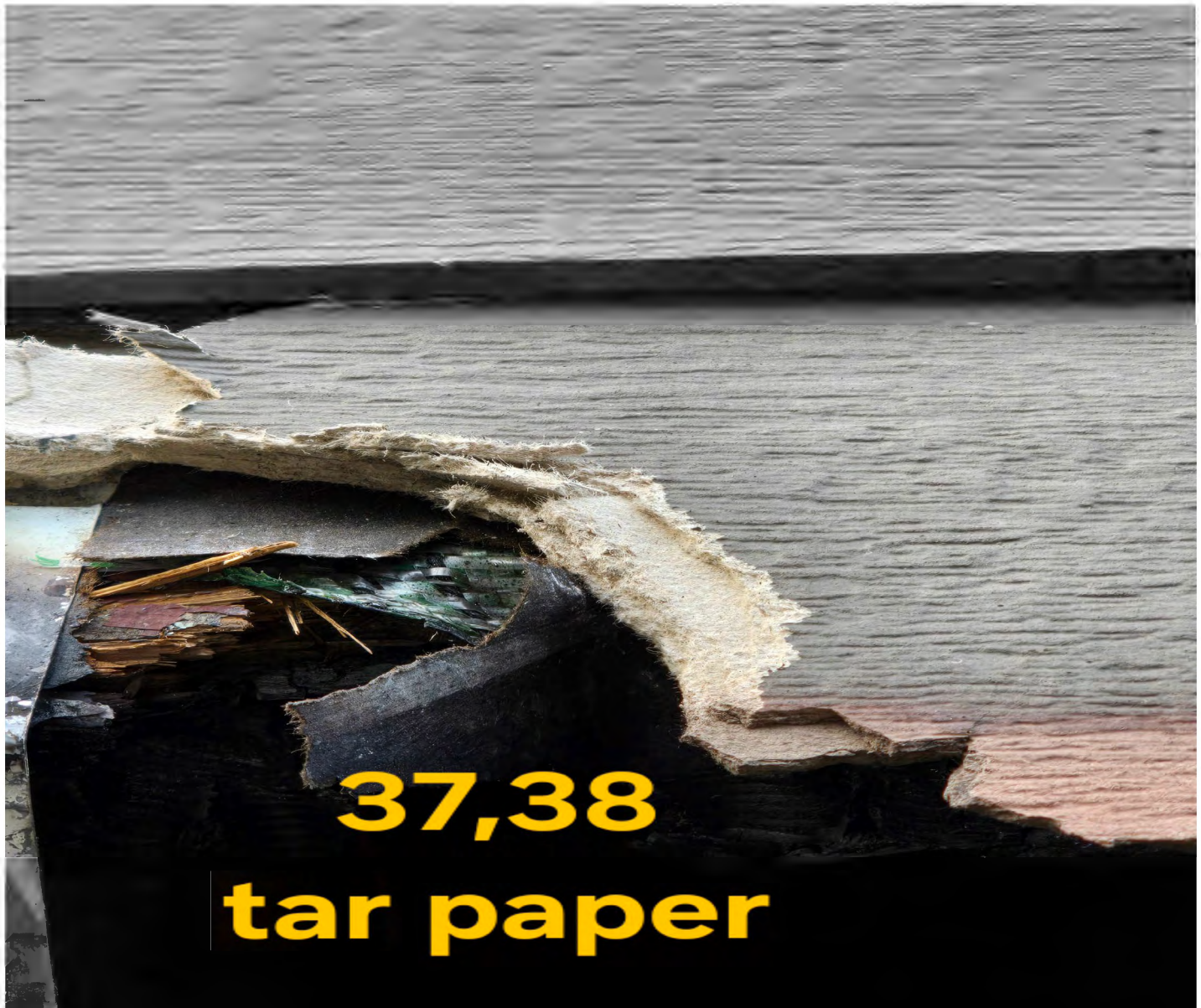












CERTIFIED ENVIRONMENTAL CONSULTING, LLC.

SURVEY REPORT

24-309

LAB # 55-1364

DATE: 12-2 SAMPLED BY: WST COST/QUOTE \$ _____ PO#/JOB # _____

CLIENT: H/I Phase Construction CONTACT: Lewis Cantrell

BILLING ADDRESS: _____ CITY/STATE: _____ ZIP: _____

PHONE: _____ CELL: Unit #7, #8, #9 EMAIL/FAX: _____

PROJECT ADDRESS: 125 Morse Park Way Longview, Washington

YEAR BUILT: 1970's TOTAL SF: 700 CONSTRUCTION TYPE wood, mbr, concrete

HOW MANY FLOORS: 1 BASEMENT PRESENT: NO

ROOFING TYPE: AS BUILDING USE PREVIOUS/CURRENT: Res/Res'

HEATING SYSTEM: electric INSULATION: ATTIC: FGI PIPES: None

SAMPLE #	DESCRIPTION OF MATERIAL	SAMPLE LOCATION	HOMOGENEOUS AREA	SQ FOOTAGE
1	Spot white	Kitchen unit #8	Hallway unit #8 Living room unit #8	600
2	Spot white	Hallway unit #8	Kitchen unit #8 Living room unit #8	
3	Spot white	LVR unit #8	Kitchen unit #8 Hallway unit #8	
4	Leak 13 in white	Kitchen unit #8	T/O	
5	Leak 13 in white	Hallway unit #8	T/O	
6	Leak 13 in white	LVR unit #8	T/O	
7	Wall tile white	Kitchen unit #8	T/O	
8	Wall tile white	Hallway unit #8	T/O	
9	Wall tile white	LVR unit #8	T/O	

❖ CERTIFIED ENVIRONMENTAL CONSULTING, LLC. ❖

615 SE CHKALOV DRIVE SUITE 12, VANCOUVER, WASHINGTON 98683-5280
(503) 221-7904 PHONE (360) 254-9385 AND FAX-(360) 891-9633

SURVEY SAMPLE FORM

LAB# JT-1364

SAMPLE #	DESCRIPTION OF MATERIAL	SAMPLE LOCATION	HOMOGENEOUS AREA	SQ FOOTAGE
10	Insulator Black	entrance unit #8	f/o	
11 A B	white CB white CBm	Kitchen unit #8	Bathroom unit #8	100L
12	shw Brown TOP	TOP layer Kitchen unit #8	entry TOP layer unit #8	200
13	shw Gray 2nd	2nd layer Kitchen unit #8	2nd layer entry unit #8	
14	shw Yellow 3rd	3rd layer Kitchen unit #8	3rd layer entry unit #8	
15	Back Board BOTM Gray	Bottom layer Kitchen unit #8	f/o as Bottom layer	
16	VT Gray TOP	TOP layer LR unit #8		
17	shw Brown TOP	TOP layer Bathroom unit #8		40
18	shw Tan 2nd	2nd layer Bathroom unit #8		
19 A B	white CB Yellow CBm	Kitchen unit #7	Bathroom unit #7	100L
20	shw Tan TOP	TOP layer Kitchen unit #7	entry TOP layer unit #7	150
21	shw Tan 2nd	2nd layer Kitchen unit #7	2nd layer entry unit #7	
22	shw Yellow 3rd	3rd layer Kitchen unit #7	3rd layer entry unit #7	
23	leveling comp BOTM Gray	Bottom layer Kitchen unit #7	Bottom layer entry unit #7	
24 A B	Gray CB white CBm	Kitchen unit #9 Kitchen unit #9	Bathroom unit #9	100L

7

4

❖ CERTIFIED ENVIRONMENTAL CONSULTING, LLC. ❖

615 SE CHKALOV DRIVE SUITE 12, VANCOUVER, WASHINGTON 98683-5280
(503) 221-7904 PHONE (360) 254-9385 AND FAX-(360) 891-9633

SURVEY SAMPLE FORM

LAB # JJ 1364

SAMPLE #	DESCRIPTION OF MATERIAL	SAMPLE LOCATION	HOMOGENEOUS AREA	SQ FOOTAGE
25	Shv Brown	Top Layer Kitchen Unit #9	Top Layer Entry Unit #9 Top Layer Bathroom Unit #9	200
26	Shv Tan	2nd Layer Kitchen Unit #9	2nd Layer Entry Unit #9 2nd Layer Bathroom Unit #9	
27	Shv Yellow	3rd Layer Kitchen Unit #9	3rd Layer Entry Unit #9 3rd Layer Bathroom Unit #9	
28	Islandly coral white	Bottom Layer Kitchen Unit #9	Bottom Layer Entry Unit #9 Bottom Layer Bathroom Unit #9	
29	Carb TM white	Carport		1200
30	Carb TM white	Carport		
31	Carb TM white	Carport		
32	Carb TM white	Carport		
33	Carb TM white	Carport		
34	Carb TM white	Carport		
35	Hard board grey	AS side Carport		2000
36	Hard board grey	AS side Carport		
37	TP Black	under hard board siding Carport		
38	TP Blue	under hard board siding Carport		